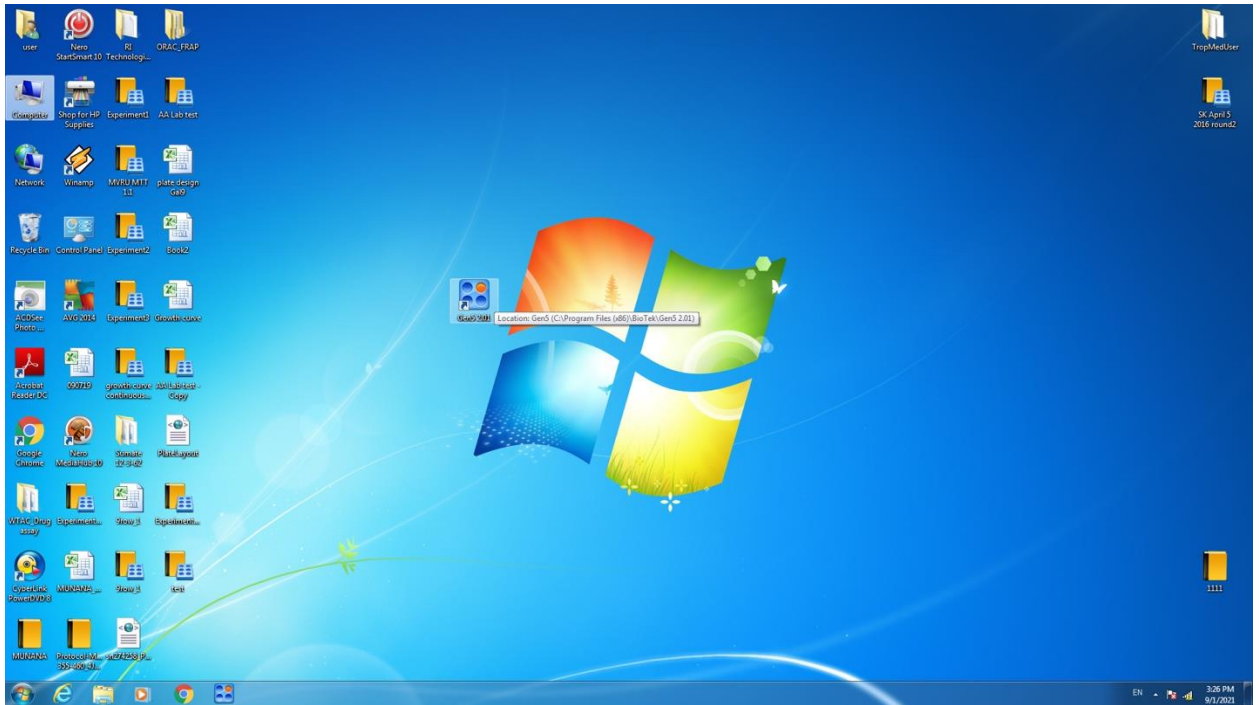


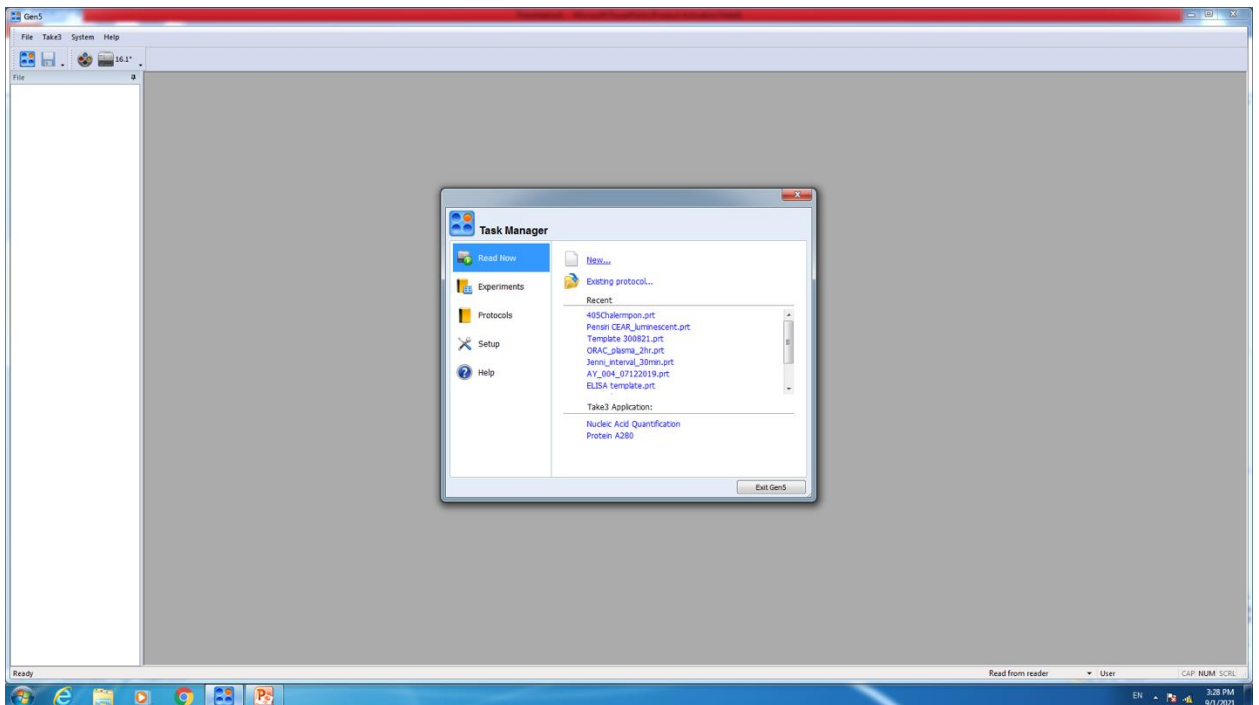
SUPPLEMENTAL MATERIAL S2

Guidelines for GEN5 APPLICATION FOR ELISA PLATE READING

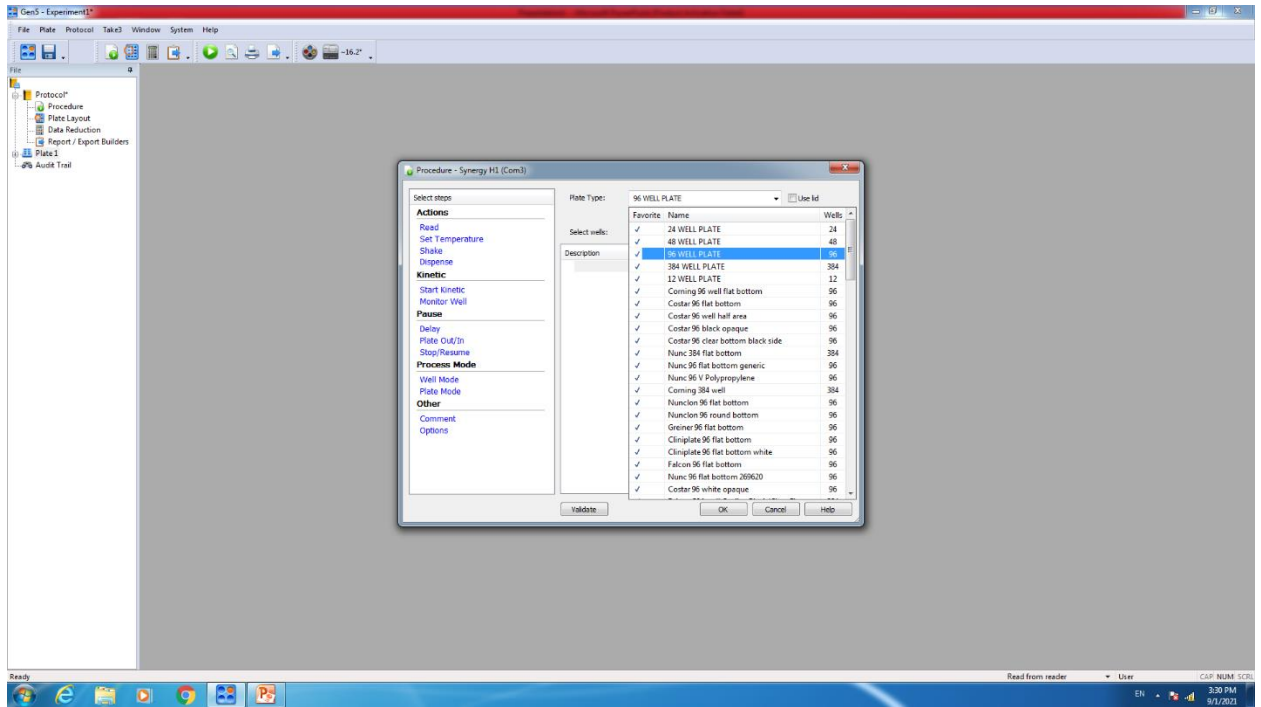
1. Open the **Gen5** program.



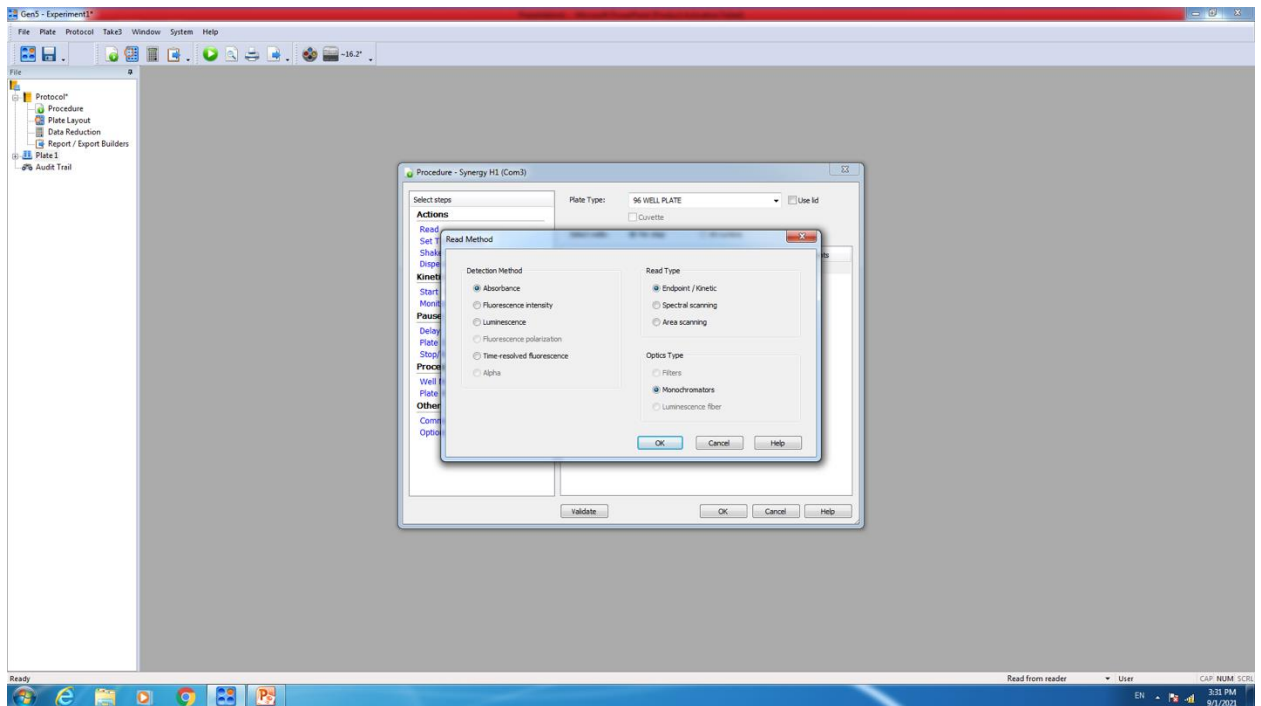
2. Create a new protocol.



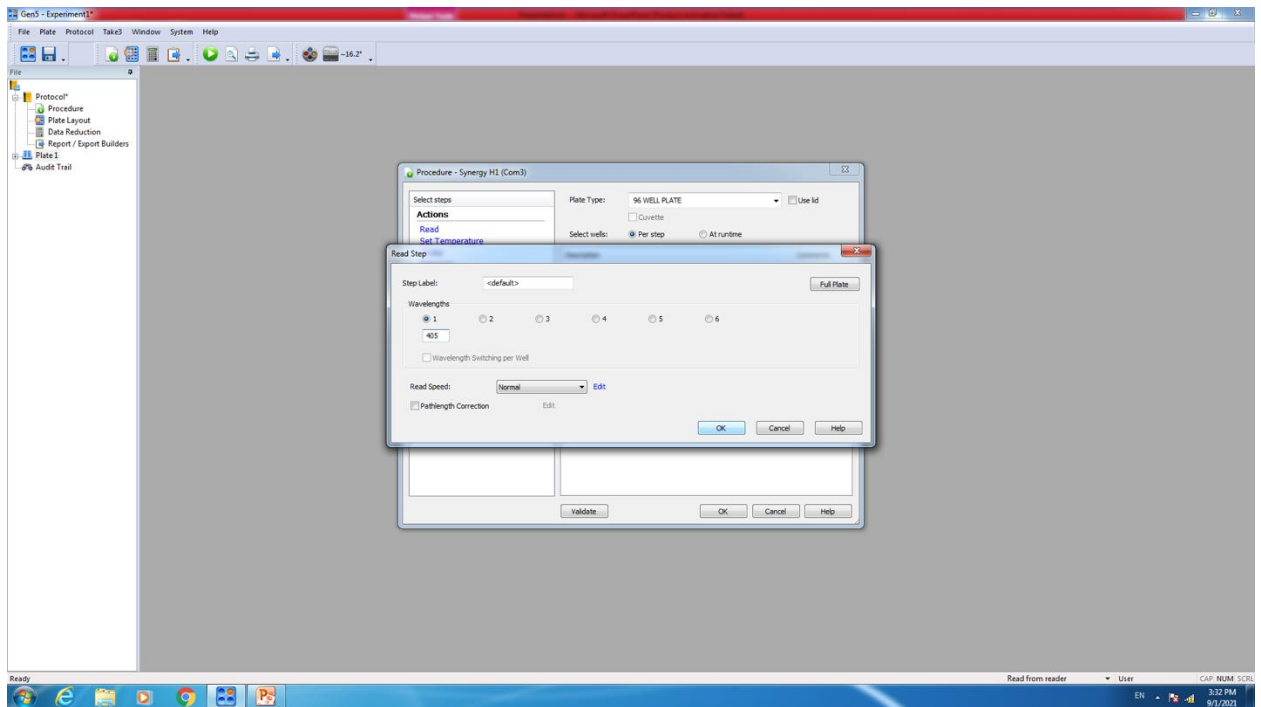
3. Select the plate type as **96 WELL PLATE**.



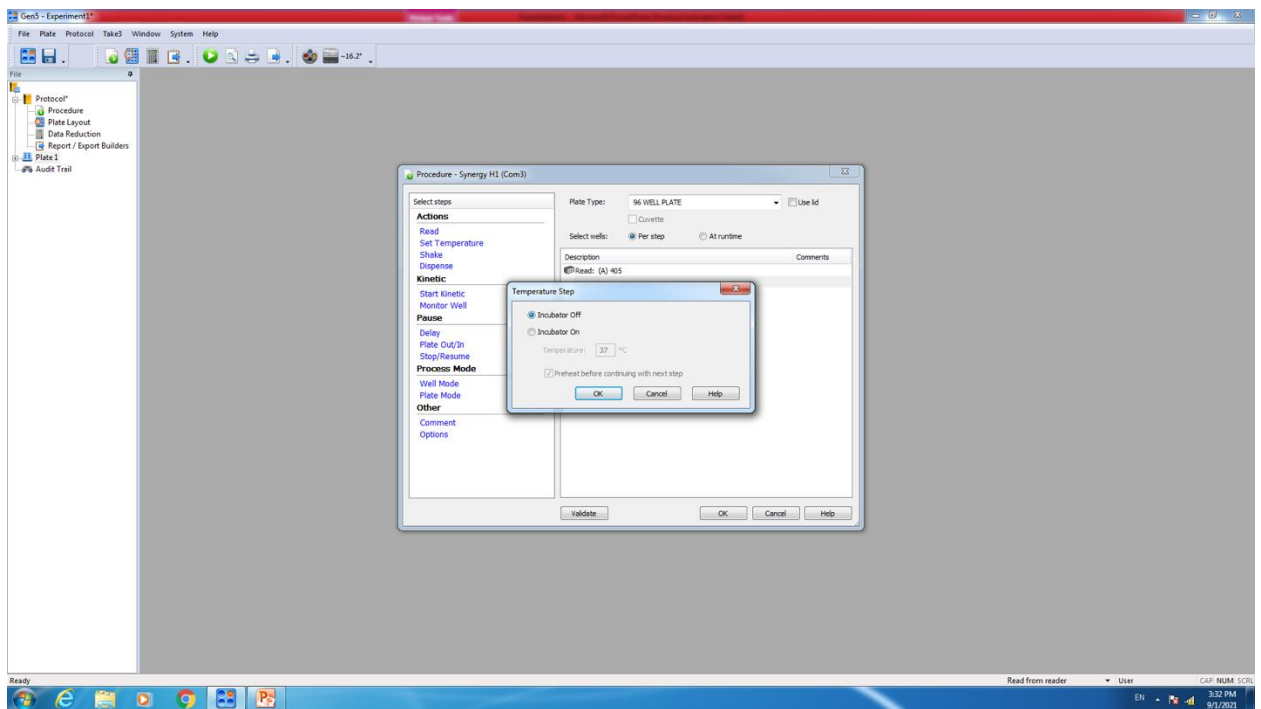
4. Click **Read** to set the Detection Method to **Absorbance**. Select **Endpoint/Kinetic** for **Read Type** and **Monochromators** for **Optics Types**.



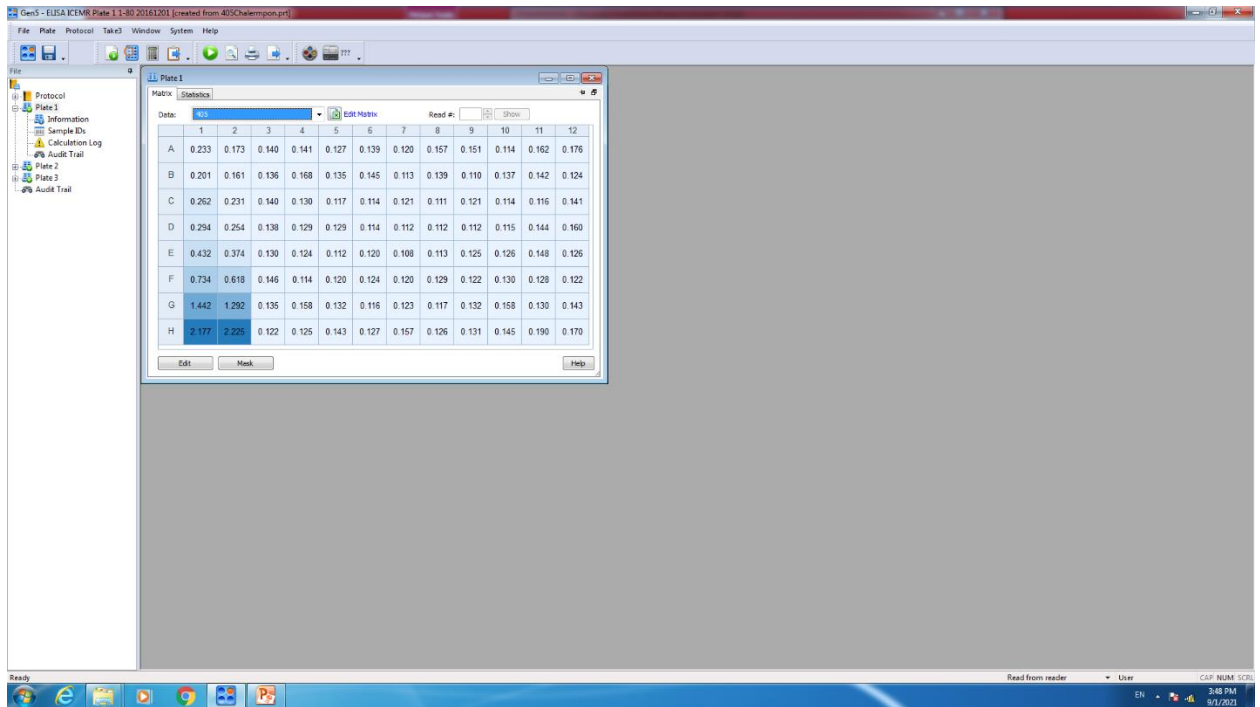
5. Set Wavelength to 405 nm.



6. Set Temperature Step to Incubator Off.



9. Place the reaction plate in the chamber of the plate reader.
10. Click **read** icon (Green play button) to read the absorbance



11. Export the absorbance data as a spreadsheet for analysis.

